

## Electronic parts catalogues from standardised data records

In April 1995, TecDoc published the first electronic catalogue on CD-ROM, which since is updated four times a year and is published at the beginning of each quarter. In the meantime, the TecDoc catalogue is published on a DVD and has established itself as standard for the electronic parts search in the automotive aftermarket: 70 Giga-Bytes of concentrated parts information for around 98% of the European vehicle fleet packed onto DVD.

This multi-lingual offline CATALOG currently offers 19 languages to choose from: Danish, German, English, Finnish, French, Greek, Italian, Dutch, Norwegian, Polish, Portuguese, Rumanian, Russian, Swedish, Serbian, Spanish, Czech, Turkish, Hungarian.

**Your advantage:**  
You are only a few clicks away from the right part!

The TecDoc CATALOG is a flexible information system, which allows you numerous personal settings to ease your daily work. The correct part can be found via:

- the selection of vehicle manufacturers' model series
- the Article Direct Search function, using the part number, OE number, trade number or comparative number (article cross-reference).
- the axle
- the typical part search tree organised according to assembly groups or via

The possibility of entering country-specific numbers such as the KBA Number in Germany, Type Mine in France or Kenteken in the Netherlands makes an unambiguous identification of the vehicle possible. Information is available for around 1.7 million spare parts from over 260 brands. Detailed product descriptions, graphics, installation instructions, standardized product descriptions for products, which are identical from a technical point of view, and recommended retail prices make your part search easier still.

**Your advantage:**  
Accurate identification of the right spare part!

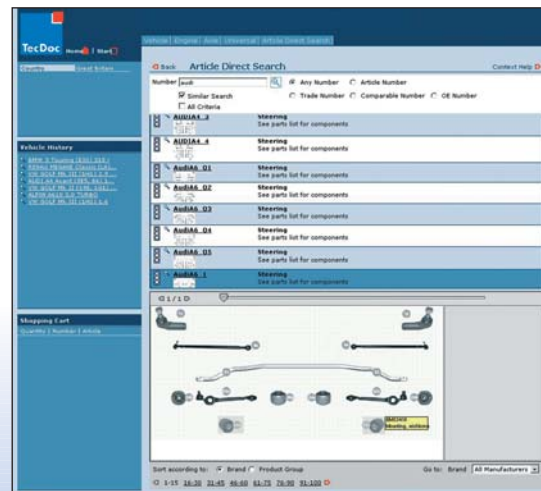
In complex areas in particular, such as steering or suspension, image-supported searches help to identify the required parts quickly and correctly. Context-sensitive complete illustrations of whole assemblies reveal more detailed information about a particular article when the mouse is placed on it (see illustration).

**Your advantage:** Quick customer service thanks to reliable part identification!

### Sought – found – and then what?

You place the parts required for the repair into a “shopping cart” and can order them directly by either e-mail or fax once the respective dealer data has been entered. An export function can be used to transfer the ordered parts into your own company's stock control system. In combination with customer or vehicle master data, it enables you to present your customer with a cost estimate or repair order within a few minutes.

You manage your garage efficiently: You correctly identify parts for orders, thus reducing the number of costly incorrect orders and deliveries. The correct parts arrive quicker and the customer can be served more quickly and more reliably - therefore increasing customer satisfaction.



## The information source for the vehicle repair market with the original data of the parts

Founded in 1994 by companies from the automotive aftermarket industry and the German Association for Spare Parts (GVA), TecDoc Informations System GmbH has established itself as the leading supplier of electronic spare parts information on the European market.

TecDoc supplies the free vehicle spares market with current and comprehensive data for identifying and ordering spares – for PC as well as CV – directly from the

databases of co-operating automotive spares manufacturers in a standardised catalogue form.

The core tasks of TecDoc are still the standardisation, gathering and distribution of data as well as the development of the necessary data technique for these tasks. Nevertheless, TecDoc works intensively on new projects to offer more efficient solutions to industry, trade and workshops.

## Additional information for passenger car and commercial vehicle repair

In addition to the parts information, all necessary data for estimating and carrying out repair, adjustment, service and maintenance work for PC and CV are available. This technical additional information contains

### Repair times

Calculation with automatic combined calculation for reference time units for wear, repair and maintenance work.

### Maintenance data

- maintenance, inspection and service information according to vehicle manufacturers' specifications
- vehicle-specific job lists
- service times recommended by the manufacturer
- lists of spare parts required and important repair instructions, e.g. about timing belt replacement

### Technical data

Technical repair and adjustment values according to the original specifications of the manufacturers in the following areas:

- general vehicle data
- ignition systems
- lubricant specifications
- filling levels
- torque
- fuel system
- vehicle electrics
- brake system
- belts
- light sources
- emission values
- chassis
- etc.

### Technical manuals

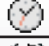







Repair manuals, which are interactively linked with detailed information about the following subjects:

- engine
- power transmission
- chassis
- electrics
- bodywork
- engine management
- diagnosis
- EOBD
- engine control
- etc.

The technical additional information can be found directly with the selected vehicle.

The maintenance services / data for PC are contained in the TecDoc CATALOG per year and user.

All other technical additional information can be accessed subject to a charge.

Technical additional information		TecDoc CATALOG
		AUDACON
PC	 Repair times	n
PC	 Maintenance data	n
PC	 Technical data	n
PC	 Technical manuals	n
CV	 Repair times	n
CV	 Maintenance data	n
CV	 Technical data	n
CV	 Technical manuals	n

## Requirements: TecDoc CATALOG on DVD in comparison to WEB CATALOG

	TecDoc CATALOG on DVD / CD-ROMs <sup>1</sup>	TecDoc WEB CATALOG
<b>Technical requirements</b>		
Software	Internet Explorer 5.5 or higher	<b>Internet Explorer 5.5 or higher</b>
Screen resolution	at least 800x600, ideal 1024x768	<b>1024x768</b>
Processor	at least P200, PIII recommended	<p>You can find the latest specifications regarding system requirements under <a href="http://www.tecdoc.net">www.tecdoc.net</a> under FAQ.</p>
Main Memory (RAM)	at least 64 MB, 512 MB recommended	
Operating System	<p>Win98*, Win NT* min SP6, Win 2000, Win ME*, Win XP, Win 2003 Server, LINUX**</p> <p><small>*For Windows 98, NT and ME Microsoft does no longer offer any support. TecDoc therefore cannot guarantee that the DVD/CD works with these operating systems. From version 04/2007 onwards, the TecDoc CATALOG will no longer support the following operating systems: WIN 95/98/ME/NT - neither as a server nor as a client installation.</small></p> <p><small>** Database installation in network with Windows clients only possible under SuSE LINUX 8.x/9.x.</small></p>	
Internet access	not applicable	<b>at least ISDN – recommended broadband</b>
<b>Memory Space required</b>	Status: CATALOG Version 02/07	
Update	~ 8,1 GB	<p><b>Direct and convenient access using a simple PC with broadband connection!</b></p>
Partial installation without graphics	~ 2,5 GB	
Full installation with graphics	~ 8,1 GB	
Network installation on server	~ 8,2 GB	
Network installation on client	~ 115 MB	
<b>Installation</b>	Place the DVD or CD no. 1 into the DVD- or CD-ROM drive on your PC. The program will start automatically, you only need to follow the on-screen instructions. Alternatively, you can start the installation process via the "setup.exe" file via the Windows Explorer.	<p><b>No program installation necessary.</b></p> <p><b>You will save memory and costs!</b></p>
<b>Update</b>	The TecDoc CATALOG is updated completely every three months. In order to prevent invalid data from leading to wrong orders or wrong calculations, the data "disappears" when the validity period has expired. Prices only remain visible for two weeks after the new version has been issued, all other data is completely blocked one month after the expiry date.	<p><b>Automatic update.</b></p> <p><b>Saving you time and costs!</b></p>
<b>Interfaces</b>	To AUTODATA, ESI TRONIC, VIVID	<b>TecCom, VIVID</b>
<b>Additional information</b>	<p>Chargeable additional information from AUDACON for PC and CV regarding</p> <ul style="list-style-type: none"> <li>• repair times</li> <li>• maintenance services / data (for PC contained in the CATALOG price)</li> <li>• technical data</li> <li>• technical manuals</li> </ul>	<p><b>Additional information from the suppliers AUDACON, AWDOC, EUROTAX integrated in the WEB CATALOG</b></p> <p>You opt for one or several providers and pay the low priced flat rate relating to the relevant provider for the use.</p>
<p>Our TecDoc support team will gladly provide assistance with all technical questions (e-mail to <a href="mailto:support@tecdoc.net">support@tecdoc.net</a>).</p>		

<sup>1</sup>13 CD-ROMs

## Search modes: how to search in the TecDoc System

- 1 via axles
- 2 via the universal article selection \*
- 3 via the part number \*\*
- 4 via the vehicle manufacturer
- 5 via the vehicle registration certificate (ID Code)
- 6 via the engine code
- 7 via the type description
- 8 via the model
- A information on country and language settings
- B the currently selected vehicle market
- C previously selected vehicles/engines/axles
- D current order list

The screenshot shows the TecDoc CD software interface. The top menu includes Program, Edit, Import, Export, Sections, Orders, Filter, Paid Release, Technical Data, Reports, User Profile, CATALOG, News, SRS, and Help. The main window is titled 'Vehicle Selection via...' and shows search filters for Country (Germany), Manufacturer (VOLKSWAGEN), and Model Series (GOLF III (1H1)). A table of search results is displayed below the filters, listing various Volkswagen Golf III (1H1) models with their specifications.

Description	Model Year	kW	HP	cc	Model
VW GOLF III (1H1) 1.4	11.91-08.97	40	55	1390	Hatchback
VW GOLF III (1H1) 1.4	10.91-08.97	44	60	1390	Hatchback
VW GOLF III (1H1) 1.6	09.92-08.97	55	75	1598	Hatchback
VW GOLF III (1H1) 1.6	07.95-08.97	74	101	1595	Hatchback
VW GOLF III (1H1) 1.8	11.91-08.97	55	75	1781	Hatchback
VW GOLF III (1H1) 1.8	11.91-08.97	66	90	1781	Hatchback
VW GOLF III (1H1) 1.8 Syncro (1HX1)	01.93-08.97	66	90	1781	Hatchback
VW GOLF III (1H1) 2.0	11.91-08.97	85	115	1984	Hatchback
VW GOLF III (1H1) 2.0 Syncro (1HX1)	08.95-08.97	85	115	1984	Hatchback
VW GOLF III (1H1) 2.0 GTI 16V	08.92-08.97	110	150	1984	Hatchback
VW GOLF III (1H1) 2.8 VR6	01.92-08.97	128	174	2792	Hatchback
VW GOLF III (1H1) 2.9 VR6 Syncro (1HX1)	10.94-08.97	140	190	2861	Hatchback
VW GOLF III (1H1) 1.9 SDI	04.97-08.97	47	64	1896	Hatchback
VW GOLF III (1H1) 1.9 D	11.91-08.97	48	65	1896	Hatchback
VW GOLF III (1H1) 1.9 TD, GTD	11.91-08.97	55	75	1896	Hatchback
VW GOLF III (1H1) 1.9 TDI	09.93-08.97	66	90	1896	Hatchback
VW GOLF III (1H1) 1.9 TDI Syncro (1HX1)	08.95-08.97	66	90	1896	Hatchback
VW GOLF III (1H1) 1.9 TDI	04.96-08.97	81	110	1896	Hatchback
VW GOLF III (1H1) Cityströmer	11.94-08.97	20	27		Hatchback

\* The "Universal Article Selection" contains articles which are not linked to a specific vehicle, i.e. paints or workshop equipment.

\*\* When a part number is entered into the Article Direct Search function, regardless of being an OE number or a trade number, all articles cross-referenced to this number will be displayed (also the parts of other parts manufacturers).