

WEB CATALOG – the fast parts search on the web!

TecDoc provides parts dealers and garages up-to-date and comprehensive data for the identification and ordering of parts – directly from the databases of cooperating parts manufacturers in standardised catalogue form. 350 gigabytes of concentrated parts information for nearly all vehicle types packed on the internet.

The WEB CATALOG is an inexpensive and easily accessible alternative to the classic TecDoc CATALOG on DVD.

In the WEB CATALOG, there are currently 19 languages available: Danish, German, English, Finnish, French, Greek, Italian, Dutch, Norwegian, Polish, Portuguese, Rumanian, Russian, Swedish, Serbian, Spanish, Czech, Turkish, Hungarian.

Your advantage: Quick customer service thanks to reliable part identification

You manage your garage efficiently:

You correctly identify parts for orders, thus reducing the number of costly incorrect orders and deliveries. The correct parts arrive quicker and the customer can be served more quickly and more reliably - therefore increasing customer satisfaction. The WEB CATALOG is a flexible information system, which allows you numerous personal pre-settings, which facilitate your daily work.

The correct part can be found via:

- the selection of vehicle manufacturers' model series
- the axle
- the typical part search tree organised according to assembly groups or via
- the Article Direct Search function, using the part number, OE number, trade number or comparative number (article cross-reference).

The possibility of entering country-specific numbers such as the KBA Number in Germany, Type Mine in France or Kenteken in the Netherlands makes an unambiguous identification of the vehicle possible. Information is available for around 1.7 million spare parts from over 260 brands. Detailed product descriptions, graphics, installation instructions, standardized product descriptions for products, which are identical from a technical point of view, and recommended retail prices make your part search easier still.

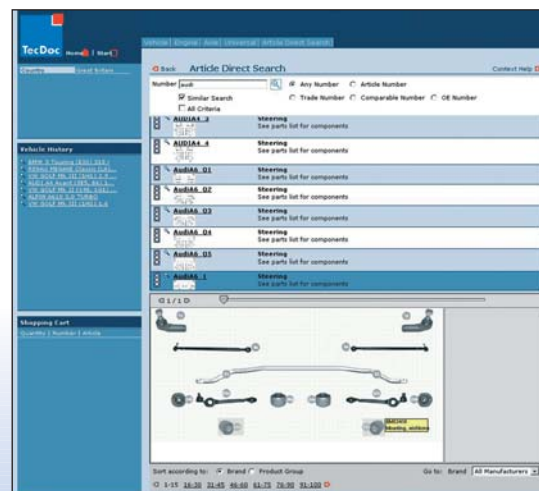
Your advantage: You are only a few clicks away from the right part!

In complex areas in particular, such as steering or suspension, image-supported searches help to identify the required parts quickly and correctly. Context-sensitive complete illustrations of whole assemblies reveal more detailed information about a particular article when the mouse is placed on it (see illustration).

Your advantage: Accurate identification of the right spare part!

Sought – found – and then what?

You place the parts required for the repair into a “shopping cart” and can order them directly by either e-mail or fax once the respective dealer data has been entered. An export function can be used to transfer the ordered parts into your own company’s stock control system. In combination with customer or vehicle master data, it enables you to present your customer with a cost estimate or repair order within a few minutes.



The information source for the vehicle repair market with the original data of the parts manufacturers

Founded in 1994 by companies from the automotive aftermarket industry and the German Association for Spare Parts (GVA), TecDoc Informations System GmbH has established itself as the leading supplier of electronic spare parts information on the European market.

TecDoc supplies the free vehicle spares market with current and comprehensive data for identifying and ordering spares – for PC as well as CV – directly from the

databases of cooperating automotive spares manufacturers in a standardised catalogue form.

The core tasks of TecDoc are still the standardisation, gathering and distribution of data as well as the development of the necessary data technique for these tasks. Nevertheless, TecDoc works intensively on new projects to offer more efficient solutions to industry, trade and workshops.

Which advantages does the online system have?

► Fast & Convenient

You save time and costs for regular programme installation and updates because the WEB CATALOG updates itself. With a simple computer and Internet connection, you always have direct and convenient access to all parts information. The convenient online payment of the TecDoc WEB CATALOG enables you to access up-to-date spare parts information, repair times and instruction manuals immediately – without the processing and mail time of a DVD CATALOG order and without the installation hassles.

► Cheap

You not only save time and money through the direct and uncomplicated online access to the information system: the TecDoc WEB CATALOG is also cheaper than the TecDoc CATALOG on DVD.

► Tailor-made

Select your ideal product package and combine the TecDoc WEB CATALOG, according to your individual needs, with the required additional information.

Join 10,200 satisfied users who have been convinced by the WEB CATALOG's data update frequency, speed and user-friendliness.

How can I use the WEB CATALOG at multiple workstations simultaneously?

► With our cost-effective MULTI-USER INHOUSE offer!

Please contact sales@tecdoc.net directly when you want to use the WEB CATALOG simultaneously on multiple workstations in your company.

Which hardware, software, and browser settings do I require for the WEB CATALOG?

You need the following to be able to use the TecDoc WEB CATALOG and convenient online accounting system:

► Hardware & Software Requirements

- Ordinary PC
- Internet Access: recommended broadband
- Screen Resolution: 1024 x 768 or higher
- Adobe Acrobat Reader, Version 5 or higher
- Java Plugin 1.4.2
- Browser: MS Internet Explorer Version 6 or higher, Mozilla Netscape Version 6 or higher, or Mozilla Firefox
- Email Address

Demo version:

Test the WEB CATALOG for free!
www.tecdoc.net

In the **free demo version** of the WEB CATALOG on the TecDoc home page (www.tecdoc.net), you can find some selected vehicles with which **you can test all catalogue functions.**



Additional information for passenger car and commercial vehicle repair

In addition to the parts information, all necessary data for estimating and carrying out repair, adjustment, service and maintenance work for PC and CV are available. This technical additional information contains

Repair times

Calculation with automatic combined calculation for reference time units for wear, repair and maintenance work.

Maintenance data

- Maintenance, inspection and service information according to vehicle manufacturers' specifications.
- Information on resetting the service interval indicator
- Lists of spare parts required and important repair instructions, e.g. about timing belt replacement.
- **New:** The maintenance data for PC from EUROTAX are now contained in the WEB CATALOG annual subscription!

Technical data

Technical repair and adjustment values according to the original specifications of the manufacturers in the following areas:

- general vehicle data
- ignition systems
- brake system
- lubricant specifications
- light sources
- belts
- torque
- fuel system
- filling levels
- vehicle electrics
- emission values
- chassis

etc.

Technical manuals

Repair manuals, which are interactively linked with detailed information about the following subjects:

- engine
- power transmission
- EOBD
- engine management
- diagnosis
- chassis
- electrics
- engine control
- bodywork

etc.

The technical additional information can be found directly with the selected vehicle.

Product

Product	WEB CATALOG	AUDACON maintenance data PC	AUDACON repair times PC	AUDACON technical data PC	AUDACON maintenance data CV	AUDACON repair times CV	AUDACON technical data CV	AWDOC repair times PC	AWDOC repair times CV	EUROTAX maintenance data PC	EUROTAX repair times PC	EUROTAX technical data PC
WEB CATALOG incl. maintenance data PC (EUROTAX)	■									■		
WEB CATALOG calc 1 incl. maintenance data PC (EUROTAX) incl. repair times PC (AWDOC)	■							■		■		
WEB CATALOG calc 2 incl. maintenance data PC (EUROTAX) incl. repair times PC (EUROTAX)	■									■	■	
WEB CATALOG calc 3 incl. repair times PC + CV (AWDOC) incl. maintenance data PC (EUROTAX)	■							■	■	■		
WEB CATALOG calc 4 incl. maintenance data PC (EUROTAX) incl. repair times PC (EUROTAX)	■	■	■									
WEB CATALOG calc 5 incl. maintenance data PC + CV (AUDACON) incl. repair times PC + CV (AUDACON)	■	■	■	■	■	■						
WEB CATALOG tech 1 incl. maintenance data PC (EUROTAX) incl. repair times PC (EUROTAX) incl. technical data PC (EUROTAX)	■									■	■	■
WEB CATALOG tech 2 incl. maintenance data PC (AUDACON) incl. repair times PC (AUDACON) incl. technical data PC (AUDACON)	■	■	■	■								
WEB CATALOG tech 3 incl. maintenance data PC + CV (AUDACON) incl. repair times PC + CV (AUDACON) incl. technical data PC + CV (AUDACON)	■	■	■	■	■	■	■					

How to search in the TecDoc System

- 1 via axles
- 2 via the universal article selection *
- 3 via the part number **
- 4 via the vehicle manufacturer
- 5 via the vehicle registration certificate (ID Code)
- 6 via the engine code
- 7 via the type description
- 8 via the model
- A information on country and language settings
- B the currently selected vehicle market
- C previously selected vehicles/engines/axles
- D current order list

The screenshot shows the 'Vehicle Selection' page in the TecDoc system. The interface includes a search bar at the top with tabs for 'Vehicles', 'Engines', 'Axles', 'Universal', and 'Article Direct Search'. Below the search bar, there are filters for 'Country' (set to Germany) and 'Section' (Vehicle Selection). A table lists manufacturers and model series, with columns for 'Manufacturer/Model Series', 'ID Systems', 'Engine Code', 'Model Description', and 'Body Type'. A 'Shopping Cart' is visible on the left side, showing items like 'Hydraulic Filter, automatic transmission' and 'Wiper Blade SILENCIO CARDBOARD'. A callout box on the right explains the 'Universal Article Selection' and the 'Article Direct Search' function.

* The "Universal Article Selection" contains articles which are not linked to a specific vehicle, i.e. paints or workshop equipment.

** When a part number is entered into the Article Direct Search function, regardless of being an OE number or a trade number, all articles cross-referenced to this number will be displayed (also the parts of other parts manufacturers).

In 5 steps to the TecDoc WEB CATALOG.

1. First-time registration on the home page

On the TecDoc web page www.tecdoc.net, you will find the option "registration" under the menu item "home". After clicking on it, the registration mask opens, in which you can enter your user data and login name, password as well as the security question and its answer. Then click on 'Register'. A link through which you can activate your account will directly be sent to your registered email address.

2. Login

A click on the link takes you back to the login window where you can now log in with your user data.

3. Purchase product

Click in the right hand area on 'Buy new product' and select the required product. You can specify a user name for your access and then need to accept the terms and conditions. The payment per bank transfer can currently not be made online – however you can still purchase the WEB CATALOG in the usual way per bank transfer with a delay of 2-3 days processing time.

4. Payment

Select the payment method 'Credit Card' and make your entries on the secure 128 Bit SSL encrypted page

5. Return to the "start page" and to 'To the WEB CATALOG'

You will automatically return to the "start page", in which the bought product will appear. The option "to the WEB CATALOG" will take you directly to the WEB CATALOG.